



Apt 6 Bayview Court

La Route De St. Aubin

St. Helier

Jersey

JE2 3SF

£1,895,000

FC129

NON QUALIFIED/REGISTERED - An impressive 3-bedroom, 2-bathroom non-qualified apartment with breathtaking sea views. Set within an elevated, gated development on the outskirts of town, this spacious home enjoys sweeping panoramic vistas across the entirety of St Aubin's Bay.

Beautifully presented and in walk-in condition, the property features a private balcony, secure underground parking for two cars plus visitor spaces, and the additional benefit of a basement storage room. Offering one of the island's finest vantage points, it is perfectly positioned to enjoy the annual International Air Display each September.

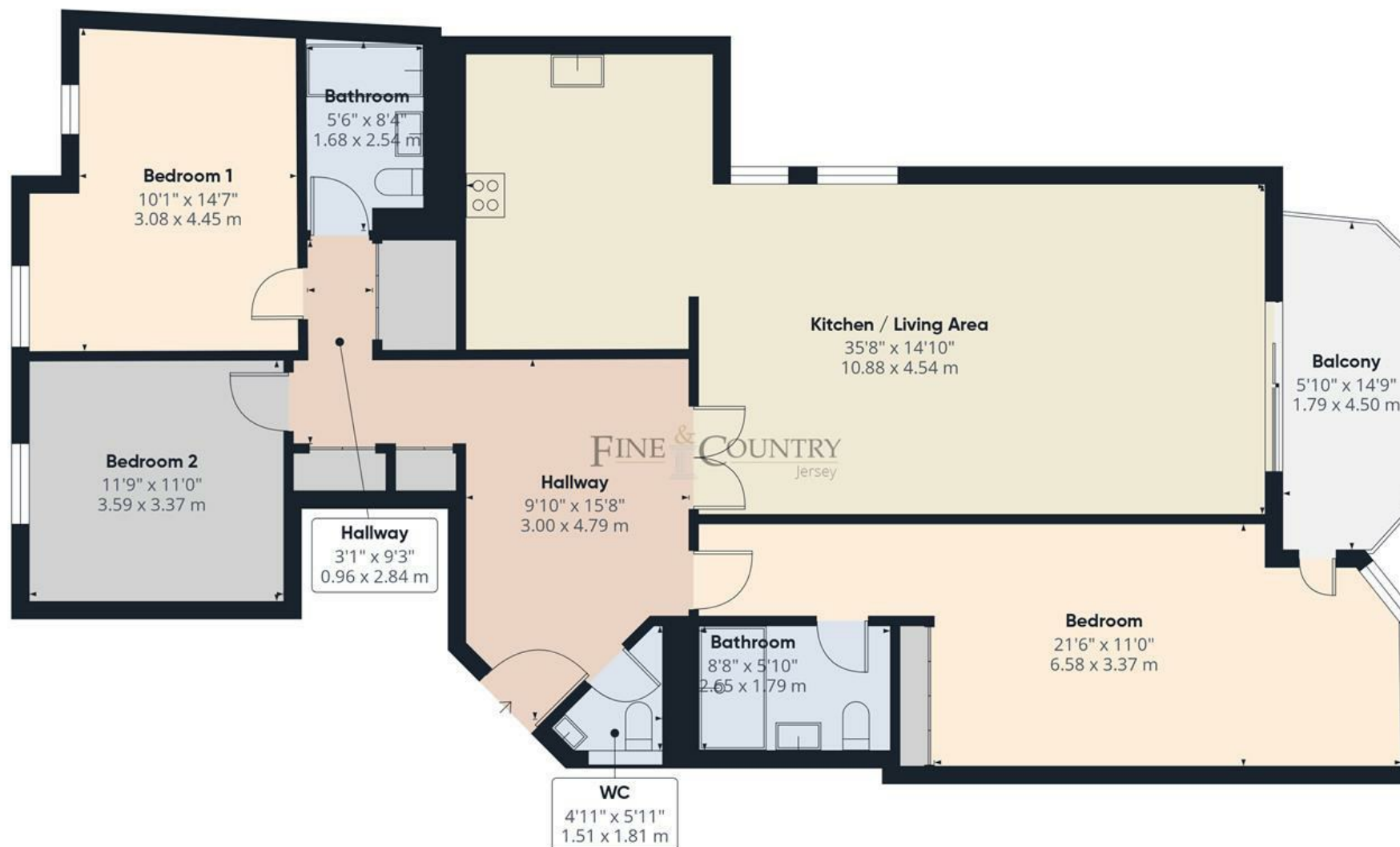
One of the distinct advantages of living in Jersey is its tax-friendly environment. Unlike the UK, Jersey does not impose death duties, Inheritance Tax, or other capital taxes, providing residents with financial peace of mind. Share Transfer.











Approximate total area⁽¹⁾

1431 ft²

132.9 m²

Balconies and terraces

83 ft²

7.7 m²

(1) Excluding balconies and terraces

Calculations reference the RICS IPMS 3C standard. Measurements are approximate and not to scale. This floor plan is intended for illustration only.

GIRAFFE360

Outside

No pets in the apartment block.

South facing balcony.

Services

Electric Economy 7 Heating

Mains water and drainage.

Directions

Travelling west on St Aubin's Inner Road, as you pass buildings on the left look for a bus stop. Bay View Court is located on the left hand side immediately after this.

Call us on

01534 888855

jersey@fineandcountry.com

www.fineandcountry.je

5 King Street, St Helier, Jersey, JE2 4WF

MONEY LAUNDERING REGULATION - Once an offer is accepted and negotiations for the purchase of a property are entered into, the prospective purchasers will be asked to produce photographic identification and proof of residency documentation, e.g. current utility bill and ID. This is in order for us to comply with the current Money Laundering Legislation.

Fine & Country Jersey advises prospective purchasers that we have prepared these sales particulars as a general guide only. We have not carried out a detailed survey, nor tested the services, appliances and specified fittings. Room sizes are approximate and rounded; they are taken between internal wall surfaces and therefore include cupboards/shelves etc, accordingly they should not be relied upon when purchasing fittings. Carpet, curtains/blinds and kitchen equipment, whether fitted or not, are deemed to be removable by the vendor unless specifically itemised within these particulars and/or within the property inventory. These particulars are supplied on the understanding that all negotiations are conducted through Fine & Country Jersey, their accuracy is not guaranteed nor do they form part of any contract.